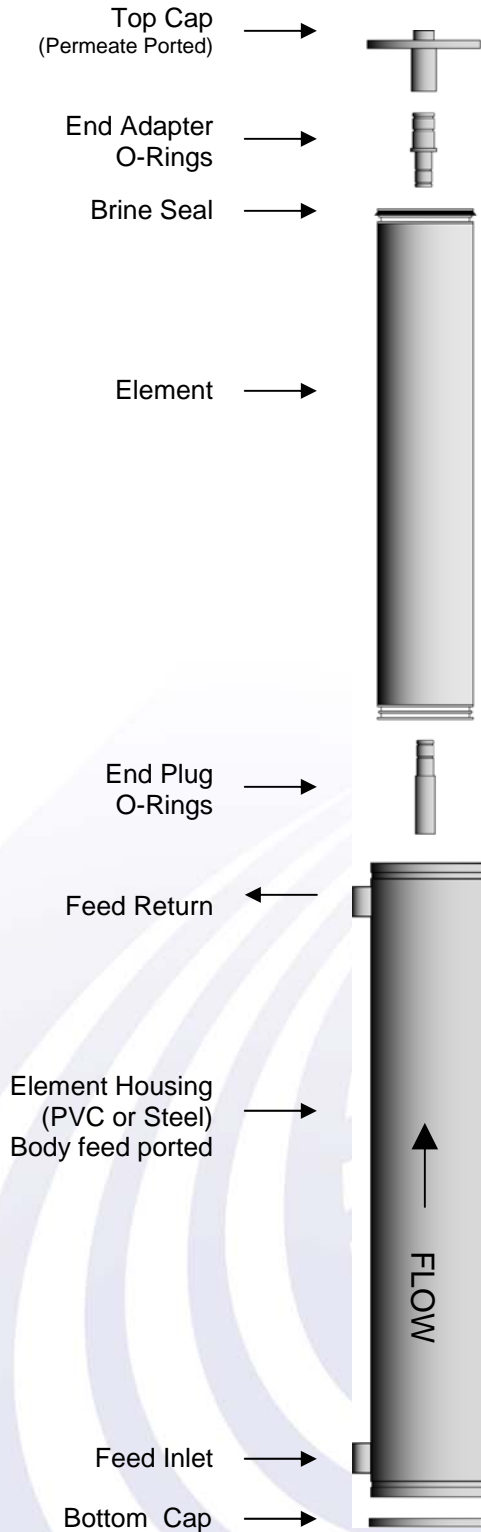


## SPIRAL ELEMENT INSTALLATION

### Typical Element Installation



Parts typically supplied with new spiral elements. Not all parts are included with all models

- (1) Element
- (2) Brine seal
- (6) O-Rings
- (1) Glycerin PAK
- (1) Glycerin MSDS
- (1) Instruction sheet

The SEPRO element maybe shipped with two different brine seals to ensure a proper fit in the various PVC and stainless steel (SS) housing configurations currently on the market.

### Typical Brine Seals

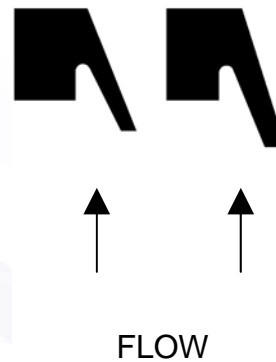


Figure 2: Seal cross section

Figure 1: Exploded view  
Note: Victaulic coupling not shown

## SPIRAL ELEMENT INSTALLATION

### Typical Element Installation

NOTE: It is highly recommended to remove the element housing from the skid for element installation.

#### Bottom Loading

- Close all isolation valves, disconnect housing from skid, and remove old element.
- Clean the housing, change/lubricate seals with glycerin, and load the new element with the flow direction via the bottom.
- This prevents system damage, personal injury, and proper system operation by preventing seal failure.

#### Top Loading

CAUTION: The element is heavy and slippery. Dropping the element into the housing or on to the ground may cause product damage or personal injury.

- Close all isolation valves and fill the housing 1/2 full with D.I. water. (water acts as a cushion during installation)
- Install the proper seal on the top ATD
- Change o-rings as needed and lubricate all seals and housing top ID with glycerin.
- Install Plug
- Gently lower element into the housing.

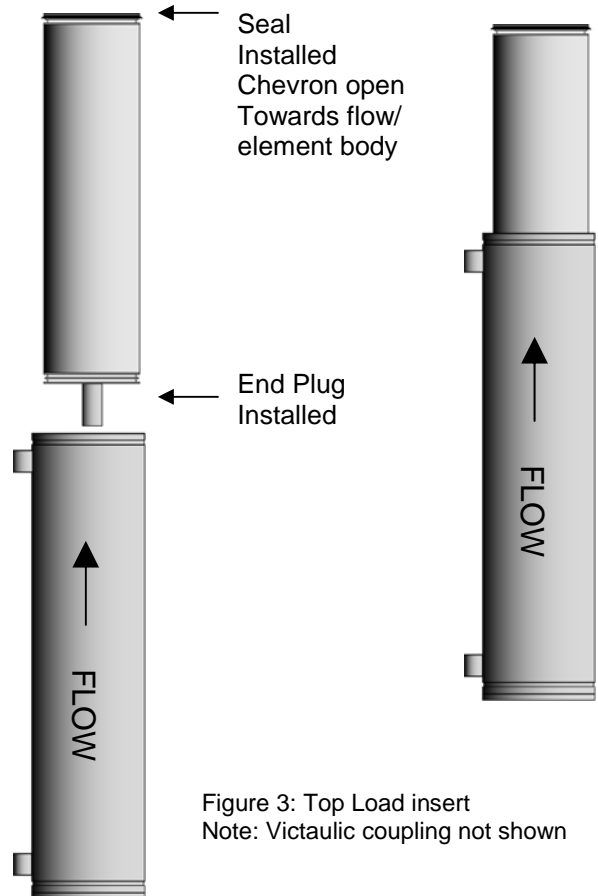


Figure 3: Top Load insert  
Note: Victaulic coupling not shown

- Insert element into the housing gently while using the water in the housing as a cushion.
- The element will catch on the flare of the seal.
- Carefully push the lip of the seal into the housing.
- Once past the seal the element will drop.
- Inspect the seal if possible to ensure that it has not rolled over. If it has rolled, remove and reinstall element.

- Lubricate the top cap seals with glycerin
  - Insert the top cap with a twisting motion as downward force is applied.
- Note: Apply glycerin to the end cap seals for an easy fit.

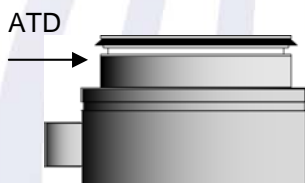


Figure 4: Top Load insert

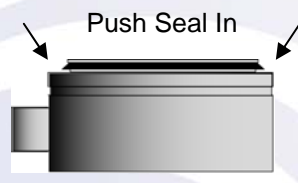


Figure 5: Push seal in

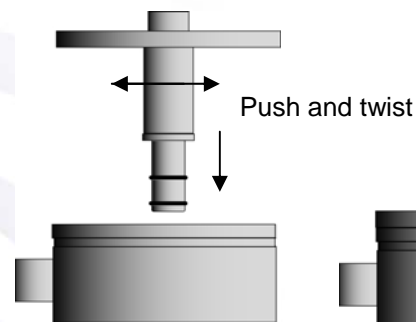


Figure 6: Top cap Install

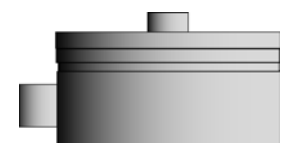


Figure 7: Top cap Complete